



Findings of independent monitoring and review

From baseline to midline and next steps

IRC Ethiopia team



Contents

- Role of IRC
- Activities
- Results
 - Baseline survey
 - Sustainability checks
 - Midline survey
 - Case study: Welenchiti
- Outputs and dissemination
- Future plans



22-9-2016 Findings of independent monitoring and review



Produced by IRC as a contribution to the One WaSH National Program

Role of IRC



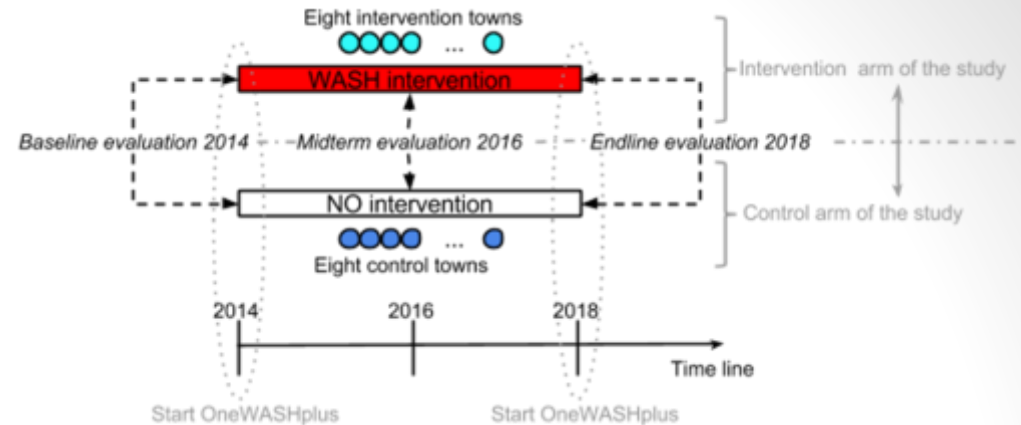
- to independently monitor the entire ONEWASH PLUS programme over its duration (2014-18)
- specific attention and focus through primary data collection and research studies to the implementation and innovation-focused activities in the 8 identified towns and satellite villages
- inputs, outputs, outcomes, impacts
- supporting the partners to manage and disseminate the knowledge developed

22-9-2016 Findings of independent monitoring and review



Produced by IRC as a contribution to the One WaSH National Program

Activities

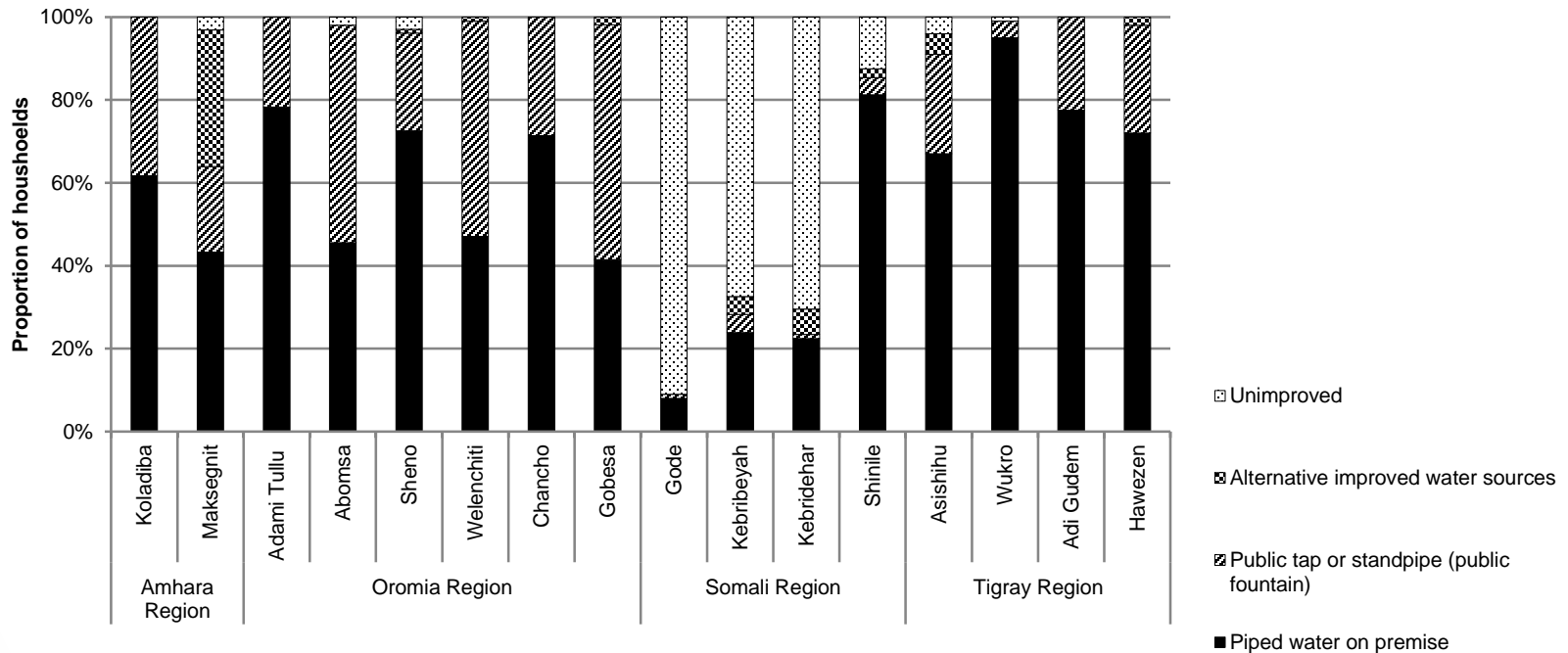


- Quasi-randomised control trial (8 project towns, 8 control towns)
 - Baseline (Sep-Dec 2014) included 7 surveys (urban system, sources, public water points, water quality, institutional WASH, waste collector, household survey)
 - Midline survey (Aug-Sep 2016) included 7 FGDs
- Annual sustainability checks
- Documentation of innovations (learning notes) and interventions (intervention tracking reports)
- Knowledge management: dropbox, web publication

22-9-2016 Findings of independent monitoring and review

Results: baseline

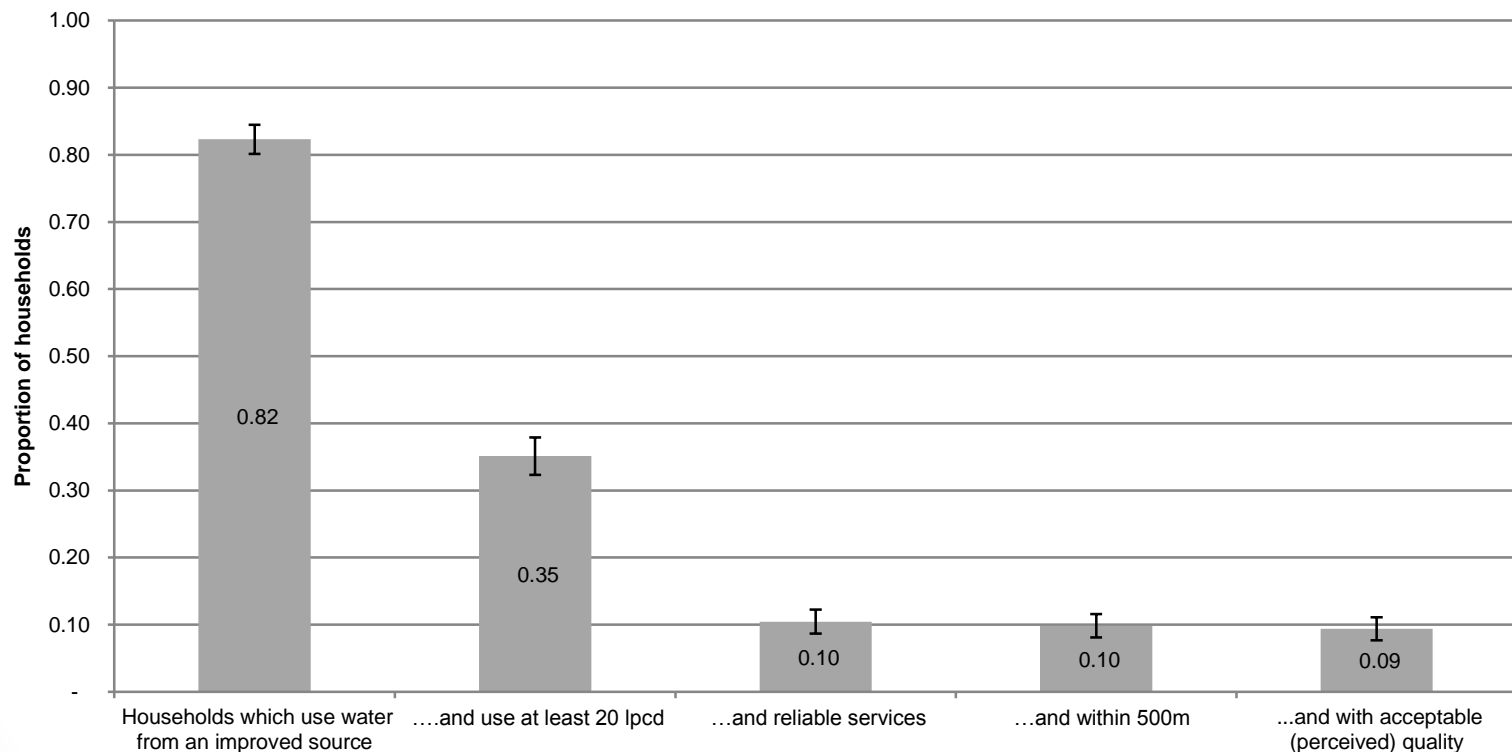
- High levels of coverage in most towns



22-9-2016 Findings of independent monitoring and review

Service levels poor

- Few households receive services meeting GTPI norms



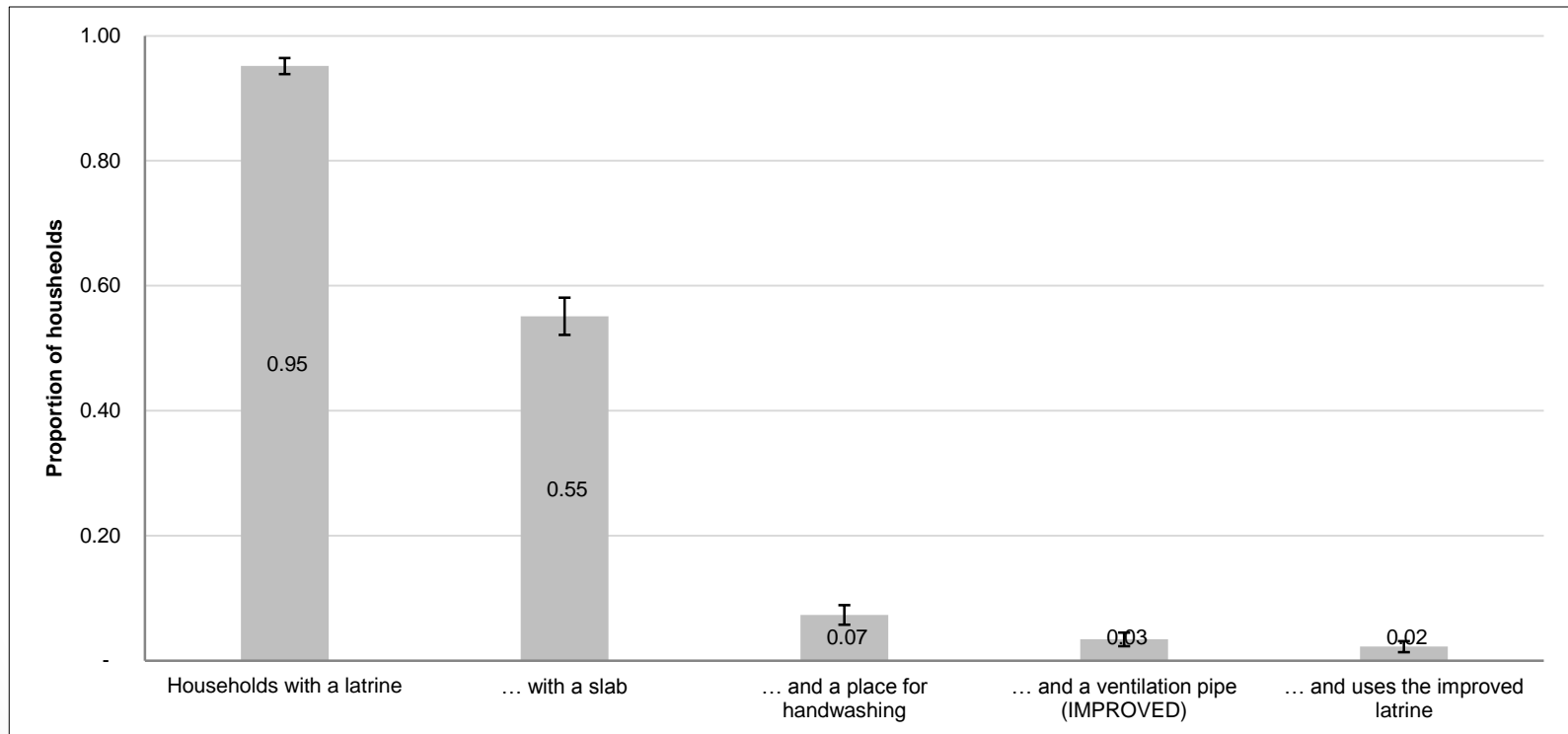
22-9-2016 Findings of independent monitoring and review



Produced by IRC as a contribution to the One WaSH National Program

Sanitation

- Lots of latrines but gaps in quality of services



22-9-2016 Findings of independent monitoring and review

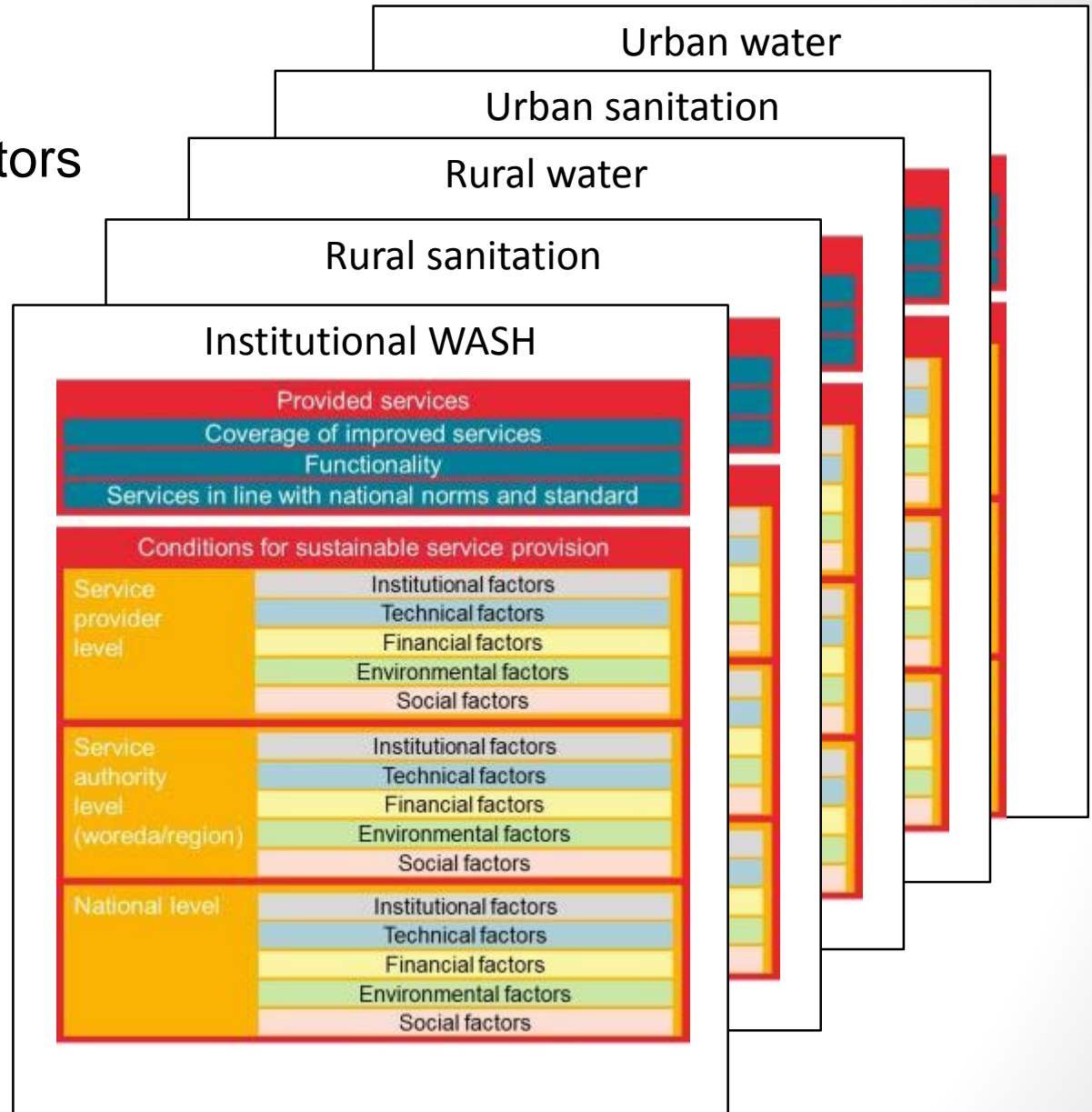


Produced by IRC as a contribution to the One WaSH National Program

3 Levels

5 sustainability factors

5 WASH services



Results: sustainability checks

- Poor scores at authority/ provider level on:
 - TWU staffing
 - Asset management
 - Initiatives for urban poor
 - Sanitary inspection for public standposts
 - NRW
 - Catchment management/ protection
- Poor enabling environment scores included aspects such as M&E, regulation and financing

22-9-2016

Findings of independent monitoring and review



Produced by IRC as a contribution to the One WaSH National Program

Results: midline survey

- Data collection still to be completed in Amhara
- Data cleaning underway
- Analysis during October 2016, report by end November 2016
- Included 7 FGDs
 - MHM with female students; and teachers, facilitators, PTA, suppliers
 - WaSH in schools
 - Solid and liquid waste management with municipality; service providers; service users (households and businesses)
 - WaSH in public places with municipality, WaSH services providers and citizens/ users who participated in the dialogue sessions
 - WaSH behaviour change (CLTSH) with sanitation task force responsible for facilitating ODF triggering and verification together with HEWs, project staff, sanitation and hygiene promoters
 - Accessing water with water consumers living in the poorest areas and/or least well served (with piped water supply) neighbourhoods

22-9-2016

Findings of independent monitoring and review



Produced by IRC as a contribution to the One WaSH National Program

Focus group discussions



22-9-2016 Findings of independent monitoring and review



Produced by IRC as a contribution to the One WaSH National Program

Results: FGD Tigray, MHM

- **Interventions:** distribution of sanitary pads, MHM changing rooms, facilities for safe disposal, including education on MHM
- **Positive changes:** Reported reduced absenteeism of girls, subject is not a taboo anymore (or it's becoming less so)
- **Challenges:** In many schools serious shortage of water supply for MHM, for hand washing after using toilets; nearly all schools don't have water storage tanks; most toilets don't provide privacy for girls; cleanliness of latrines is an issue
- **Sustainability:** continuity of procurement and distribution of pads on project end is an issue. Some opportunities exist, some schools and PTAs are allocating budget. Local reusable sanitary pad providers are being organized, but haven't yet started producing or selling to schools.

22-9-2016 Findings of independent monitoring and review



Produced by IRC as a contribution to the One WaSH National Program

Results: FGD Tigray, CLTSH

- **Interventions:** triggering in sections with high OD, task force at woreda and kebele level that involves other sector offices beyond health to coordinate, enforce sanctions/fines on non-compliant households; health education by HEW; use of existing social mobilizations structures like development groups, health army
- **Positive changes:** Reported increased latrine construction and utilization, weekly campaigns to clean up the town, local production of slabs in Adishu
- **Challenges:** difficult to achieve ODF in towns: absence of functioning latrines in public places; lack of space to construct latrines in compounds; public rental houses have non-functional latrines and no budget for maintenance; tenant households with absentee owners; poor households. Plans to construct communal latrine did not materialize because of lack of budget.
- **Sustainability issue:** Lack of pit-emptying service provision by the municipality, high rates charged by private service providers from other towns

22-9-2016

Findings of independent monitoring and review

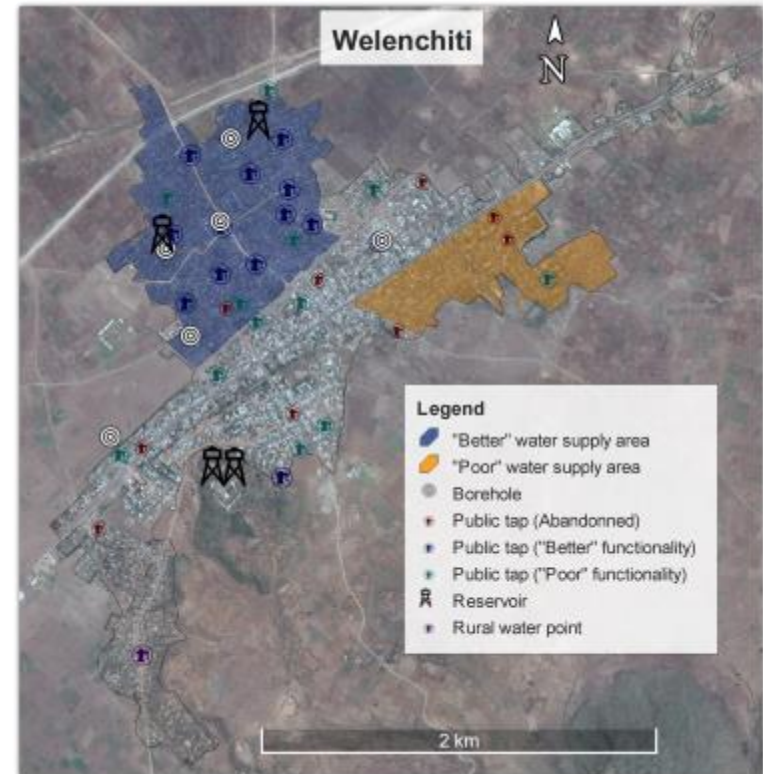


Produced by IRC as a contribution to the One WaSH National Program

Results: case study

Welenchiti

- Underperforming water systems create inequities in water supply
- Inequity between good and poor supply areas is not about quantity
- Rather it is about the costs (financial, time, emotional distress) associated with accessing water

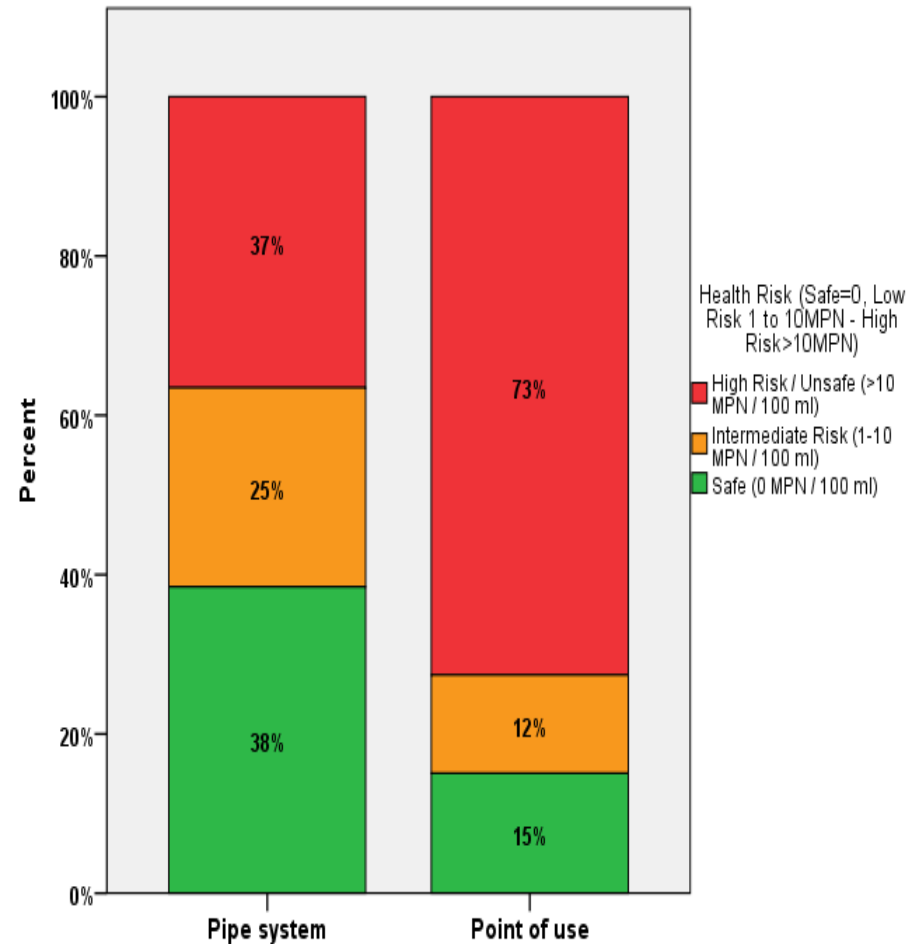
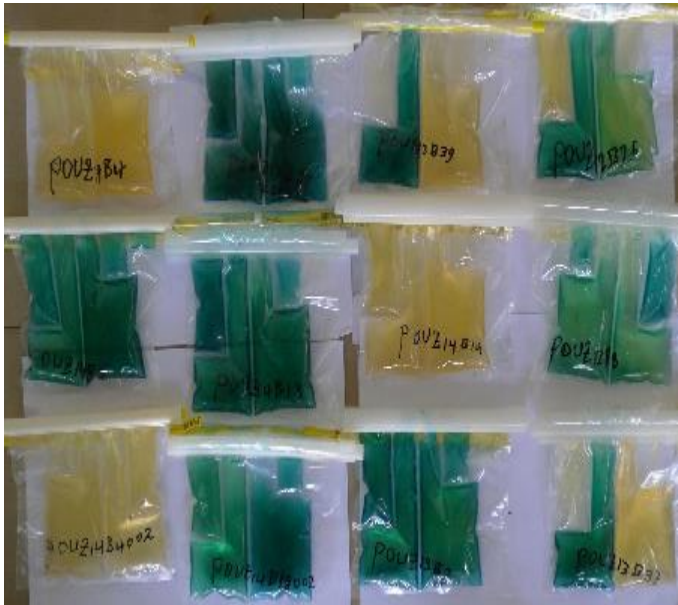


22-9-2016

Findings of independent monitoring and review

Results: case study

Welenchiti




22-9-2016 Findings of independent monitoring and review

IRC Home What we do Where we work News Blog Tools Resources Press About

ONEWASH Plus

IRC, with the Horn of Africa Regional Environment Centre (HoAREC) and Network, are contracted by UNICEF to undertake independent monitoring and to support communications for the UK Department for International Development funded ONEWASH PLUS programme. Improving WASH services in small towns in Ethiopia is a key objective.

Posts Further information



News and information



Innovative contracting arrangements to bring together development of infrastructure with capacity building.

Innovative new contracting arrangements combining infrastructure development and capacity building.

3 updates



Monitoring for Sustainability – A Learning Exercise

A Learning Exercise on Monitoring for Sustainability supported by IRC with the One WASH Network.

3 updates



Preparatory

The Ethiopia's key sectors: just what is the country's mix of priority? And will services at the...

3 updates



Priority for One World

Priority for One World National Programme – focus of second multi-stakeholder forum in Ethiopia

The Sustainable 7 steps – updates from the 1000 – in the first annual ONEWASH sector work...

3 updates

Blogs

ONEWASH in progress is a neglected human right

Access to water and sanitation is a basic human right. So how, whatever the circumstances, should we focus on how to ensure that these basic human rights are met?

3 updates


Dr. Mariette Bost
Published on: 24/10/2016

To: [SHARE](#) [PRINT](#) [COPY TO WEBSITE](#)

[SHARE](#)

Resources

<p>Build Capacity</p> <p>Build Capacity: Planning an innovative contracting</p>	<p>MOU</p> <p>MOU: services to small towns: baseline report for a system</p>	<p>Build assets</p> <p>Build assets management in Jijiga, Somali Region – baseline survey</p>	<p>Town Health</p> <p>Town Health Assessment: Harar, Ethiopia</p>	<p>Town Health</p> <p>Town Health Assessment: Shewa, Ethiopia</p>	<p>Town Health</p> <p>Town Health Assessment: Amhara, Ethiopia</p>
--	---	--	--	--	---




ONEWASH Plus sustainability checks

First annual report (2015)

Mariette Adank, Eyob Dejene and John Buttenworth

October 2016



ONEWASH Plus report produced by IRC as a contribution to the ONEWASH National Program.



Sustainability of WASH services Maksegnit, Amhara

Town audit statement

In June-July 2015, a sustainability check of WASH services was conducted in Maksegnit town, Amhara Region under the ONEWASH Plus Programme. This fact sheet presents a summary of the key findings relating to sustainability challenges in town water supply, rural water supply, urban and rural sanitation and institutional WASH. As the first sustainability check has been undertaken at the start of the programme implementation, the results reflect that WASH services are not improved and capacity building interventions have not been implemented yet. Based on the findings, sustainability plans with details of suggested actions to overcome the sustainability challenges will be prepared.

Key findings

Town water supply: The town water supply is not well staffed. Furthermore, no sustainable technical, social and environmental sustainability challenges have been identified.

Rural water supply: Technical sustainability challenges include the limited maintenance capacities and condition upon part supply status. Furthermore, financial sustainability challenges have been identified.

Urban sanitation: solid waste management is weak in Maksegnit town. Rural sustainability is also an issue, due to the absence of proper strategies.

Institutional WASH: Overall sustainability of institutional WASH is an ongoing one and requires an immediate plan. Institutional sustainability of institutions and service provision need to be a challenge.

Overview of water supply and sanitation in Maksegnit

The water supply system of Maksegnit town is managed by a utility with an operator and an accountant in town (small). According to the utility (based on meter connections and sales data) the water system serves 1206 with public taps, 22% of the households with private yard connections while the remaining use shared facilities. However, the shared water supply system functions inconsistently and service levels are low in terms of reliability, quantity, and quality. The per capita consumption is only 7 litres per capita per day.

According to the 2014 baseline study, the water supply coverage in the surrounding village is 78%, with people rarely depositing on communal latrines, many of which do not provide safe water.

Only 42% of the town population accesses improved sanitation facilities. The legal waste collection, collection and transportation is provided primarily by operators from nearby towns. The solid waste collection is provided by private private companies.

Improved sanitation coverage in rural surroundings is the lowest of the seven programme facilities, with only 4% of the people accessing improved sanitation facilities.

Of the 11 schools, a full one (9%) have water supply, but 82% have latrine facilities. Of the 6 health facilities, 80% have water supply and 87% improved sanitation facilities.



ONEWASH Plus Programme fact sheet produced by IRC as a contribution to the ONEWASH National Program.

22-9-2016 Findings of independent monitoring and review

Outputs and dissemination

- Inception report
- Intervention tracking reports (2014, 2015)
- Learning notes (1. South-south collaboration, 2. Sanitation Master Plans, 3. Sustainability checks, 4. Private Sector, 5. BCBT, 6. VFM)
- Private sector bottlenecks report
- Baseline report (April 2015) and 9 town factsheets
 - Open access paper in Journal of WASH for Development
- Sustainability check report and 8 town audit statements
- One seminar and some blogs and news
- <http://www.ircwash.org/projects/onewash-plus>

22-9-2016

Findings of independent monitoring and review



Produced by IRC as a contribution to the One WaSH National Program

Next steps and questions

- Reporting of midline survey
- Second round of sustainability checks and plans
- Learning note on integrated S&H interventions
- Extending VFM analysis
- Journal papers on Sus. checks and BCBT



22-9-2016 Findings of independent monitoring and review



Produced by IRC as a contribution to the One WaSH National Program

Questions

- How might we provide better feedback to control towns?
- Could we improve internal sharing of documents building on this meeting?
- How could dissemination of outputs be improved?
- What topics should future learning notes focus on?



22-9-2016 Findings of independent monitoring and review



Produced by IRC as a contribution to the One WaSH National Program